

KUSTOM KIT **bargear**TM
Serve in style



HOSPITALITY WEAR 2009

Welcome to our 2009 Bargear collection

Bargear is a collection of fashionable yet functional tailoring designed specifically for staff in the hospitality sector and as the perfect base for your bar, restaurant or hotel logo.

Inspired styling details and our innovative stretch fabrics provide greater comfort and performance to ensure your staff will always 'serve in style'.

Contents

KK119	NEW
Men's Bar Shirt Turn Back Cuff	3
KK120	
Men's Bar Shirt - short sleeve	4
KK735	
Women's Bar Shirt - short sleeve	5
KK121	
Men's Bar Shirt - long sleeve	6
KK738	NEW
Women's Bar Shirt - long sleeve	7
KK122	NEW
Men's Bar Shirt Mandarin Collar short sleeve	8
KK736	NEW
Women's Bar Shirt Mandarin Collar short sleeve	9
KK137	NEW
Men's Bar Waistcoat Shirt long sleeve	10
KK737	NEW
Women's Bar Waistcoat Shirt long sleeve	11
KK745	
Women's Bar Shirt 3/4 Sleeve	12
KK795	
Women's Bar Shirt Cap Sleeve	13
KK511	NEW
Men's Bar T-Shirt	14
KK512	NEW
Women's Bar T-Shirt	15
KK513	NEW
Bar Apron - short	16
KK514	NEW
Bar Apron - long	17
Technical Information	18

NEW

KK119

BAR SHIRT

TURN BACK CUFF



Fabric Content

57% cotton 40% polyester 3% Lycra

black

Fabric Weight

120gsm

Size Range

To fit

S M L XL 2XL

see page 21 for full size specifications



STRETCH

BAR SHIRT SHORT SLEEVE

MEN'S - KK120

**Fabric Content**

57% cotton 40% polyester 3% Lycra

black

chocolate **NEW**

Fabric Weight

120gsm

Size Range

To fit

S M L XL 2XL

see page 21 for full size specifications



STRETCH



WOMEN'S - KK735

Fabric Content

57% cotton 40% polyester 3% Lycra

Fabric Weight

120gsm

Size Range

To fit

8 10 12 14 16 18 20

see page 21 for full size specifications

black

chocolate

NEW



STRETCH

BAR SHIRT LONG SLEEVE

MEN'S - KK121



Fabric Content

57% cotton 40% polyester 3% Lycra

black

Fabric Weight

120gsm

Size Range

To fit

S M L XL 2XL

see page 21 for full size specifications



STRETCH



NEW WOMEN'S - KK738

Fabric Content

57% cotton 40% polyester 3% Lycra

black

Fabric Weight

120gsm

Size Range

To fit

8 10 12 14 16 18 20

see page 21 for full size specifications



STRETCH

NEW

BAR SHIRT
MANDARIN
COLLAR
SHORT SLEEVE

MEN'S - KK122



Fabric Content

57% cotton 40% polyester 3% Lycra

black

Fabric Weight

120gsm

Size Range

To fit

S M L XL 2XL

see page 21 for full size specifications



STRETCH



WOMEN'S - KK736

Fabric Content

57% cotton 40% polyester 3% lycra

black

Fabric Weight

120gsm

Size Range

To fit

8 10 12 14 16 18 20

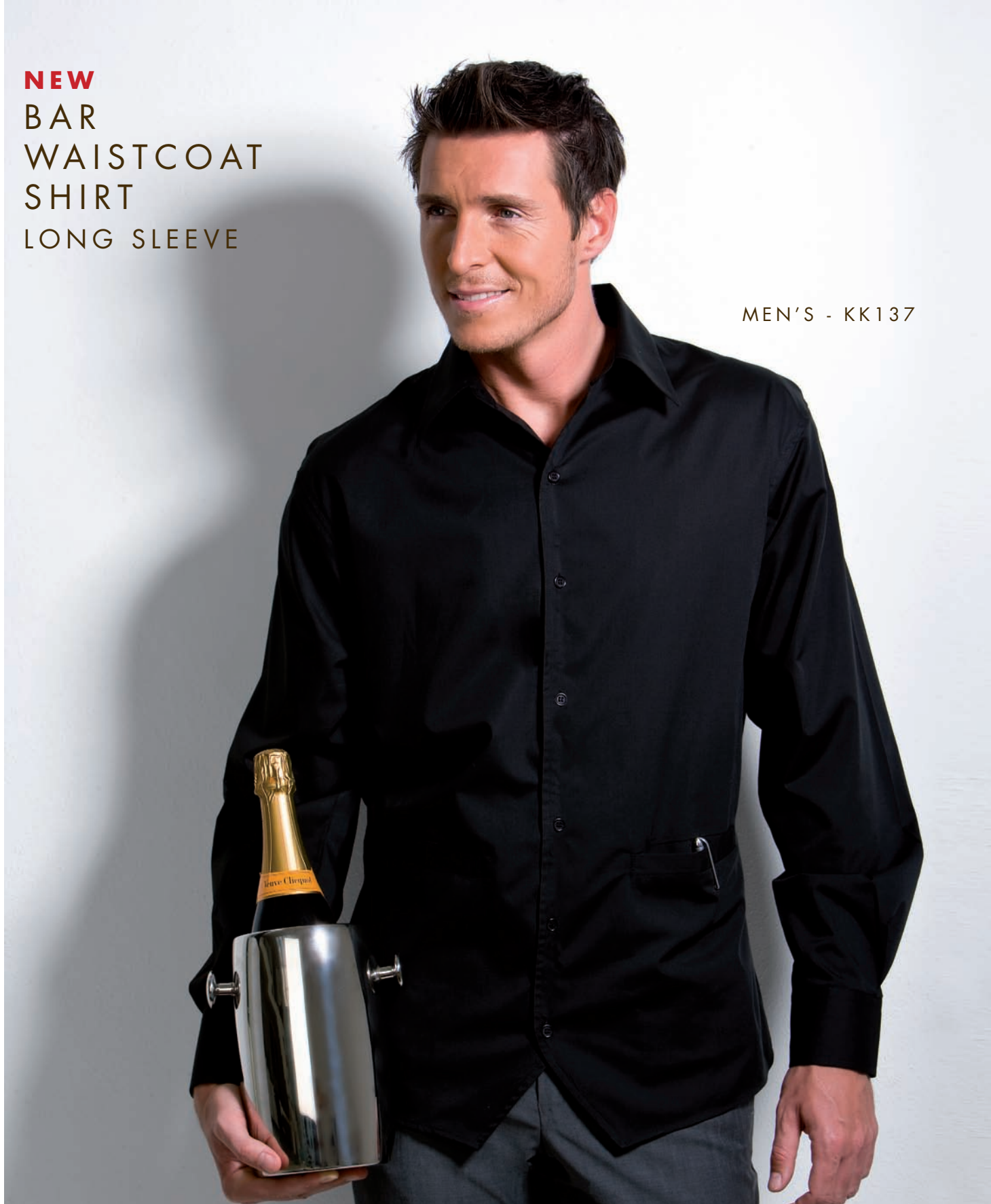
see page 21 for full size specifications



STRETCH

NEW
BAR
WAISTCOAT
SHIRT
LONG SLEEVE

MEN'S - KK137



Fabric Content

57% cotton 40% polyester 3% Lycra

black

Fabric Weight

120gsm

Size Range

To fit

S M L XL 2XL

see page 21 for full size specifications



STRETCH



WOMEN'S - KK737



Fabric Content

57% cotton 40% polyester 3% Lycra

black

Fabric Weight

120gsm

Size Range

To fit

8 10 12 14 16 18

see page 21 for full size specifications



STRETCH

KK745
WOMEN'S
BAR SHIRT
3/4 SLEEVE



Fabric Content

57% cotton 40% polyester 3% Lycra

black

white

Fabric Weight

120gsm

Size Range

To fit

8 10 12 14 16 18 20

see page 21 for full size specifications



STRETCH

KK795
WOMEN'S
BAR SHIRT
CAP SLEEVE



Fabric Content

57% cotton 40% polyester 3% Lycra

Fabric Weight

120gsm

Size Range

To fit

8 10 12 14 16 18 20

see page 21 for full size specifications

black

white

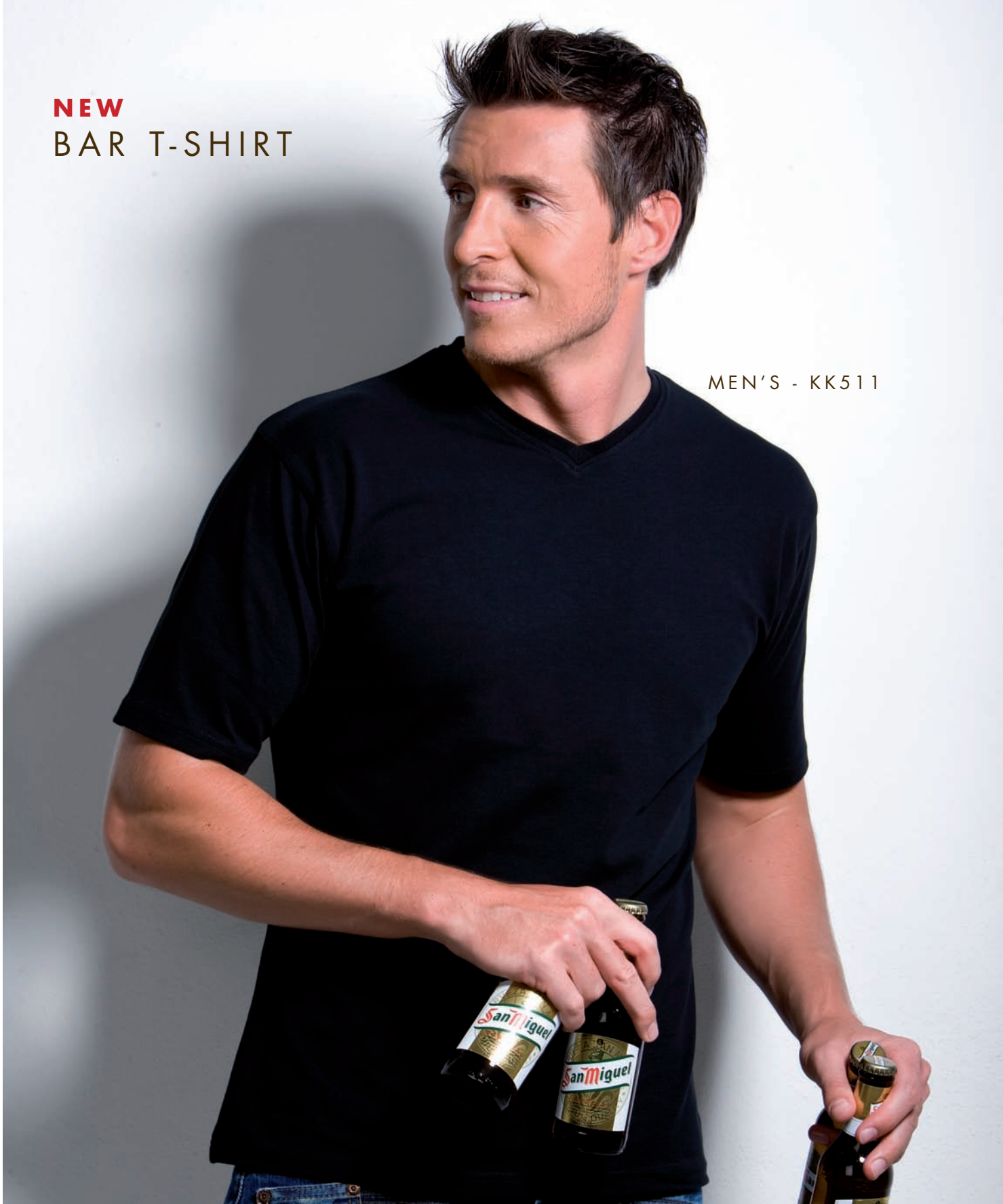
light blue



STRETCH

NEW
BAR T-SHIRT

MEN'S - KK511



Fabric Content

95/5 cotton elastane

black

STRETCH

Fabric Weight

200gsm

Size Range

To fit

S M L XL 2XL

see page 21 for full size specifications



WOMEN'S - KK512

Fabric Content

95/5 cotton elastane

black

STRETCH

Fabric Weight

200gsm

Size Range

To fit

8/10 12/14 16/18 20/22

see page 21 for full size specifications

NEW
BAR APRON



SHORT - KK513

Fabric Content
100% cotton twill

Fabric Weight
280gsm

Size Range
one size only

black





LONG - KK514

Fabric Content
100% cotton twill

Fabric Weight
280gsm

Size Range
one size only

black



THE E D E W KNO

Ever wanted to know how to measure yourself correctly or what exactly is the best way to remove red wine from your favourite shirt? You'll find the answers to these questions and quite a few others right here...

Caring for your Kustom Kit garments

All you need to know (and perhaps a little bit more!) on how to preserve the look, feel, fit and wear of your Kustom Kit garment.

Garment Fibre Properties

Cotton: Absorbent, strong, washes well with care.


Lycra® & Elastane: High stretch recovery with good shape retention.


Polyester: Durable, easy care, good shape retention.


Washing Always look for the garment care label and follow the washing instructions. Washing machines, powders and fabrics are specially manufactured to ensure that when washed at the right temperature your clothes will come out looking their best time after time.

The washtub symbol tells you the washing process to be used.

 60° Washing Symbol Spin Cotton Cycle

 60° Washing Symbol Spin Synthetic Cycle

 40° Washing Symbol Spin Cotton Cycle


 40° Washing Symbol Spin Synthetic Cycle

- Before washing, close all zips, undo buttons and flatten out collars and cuffs. Check pockets and linings for loose or sharp objects.
- Turn garments inside out to reduce abrasion so avoiding contamination by fibres from other garments during the washing cycle.
- Always read the label for correct washing temperature.
- Do not overload the washing machine.
- Always use the correct amount of detergent depending on how dirty the garments are.
- Check garments regularly for marks or stains and remove as soon as possible. See our Stain Removal guide.

Drying Always check the care label to see if a garment can be tumble dried. When tumble drying the following is recommended:

Garment Type	Drying Time
Cotton	50-100 minutes
Cotton Polyester	35-55 minutes
Heavy Synthetics	45-65 minutes
Light Synthetics	30-40 minutes

In cases where tumble drying is not appropriate, there will often be alternative drying methods suggested such as dry flat or drip dry.

-  Do not Tumble Dry
- Dry Flat - Re-shape Whilst Damp
- III Drip Dry

- Re-shape whilst damp, by gathering the hem in one hand, holding the shoulders in the other and pulling back into shape.

- When line drying shirts or jackets, always hang from the tail.


- When line drying knitted garments, always fold over the line and position pegs at the under arm.


- When line drying trousers or skirts, always hang from the waist.


- Do not leave clothes exposed to the sun after they have dried.


- Avoid drying garments on radiators or in intense heat as this could distort the shape.

Ironing The iron symbols advise the optimum temperature at which to iron. The dots represent the recommended iron temperature - the more dots the hotter the iron.

 Iron Symbol with one dot
Up to 110° (Cool)

 Iron Symbol with two dots
Up to 150° (Warm)

 Iron Symbol with three dots
Up to 200° (Hot)

 Do Not Iron Symbol
Do not Iron/Steam Treatment is not recommended

- Iron each garment on recommended setting as per the care label.

- Do not iron directly onto a printed logo. Always iron on the reverse.

- When ironing dark garments avoid 'iron shine' by either pressing on the inside of the fabric or through a damp cloth. This is not applicable if using a steam iron.

- Do not iron over buttons, try to press around them. If you do break one, an extra is included on the care label.

Common Wash Problems

Shrinkage: The major factors contributing to shrinkage are heat and excessive agitation. Do not wash at too high a temperature. Always wash on the most appropriate cycle and follow the care instructions.

Pilling & Bobbling: Abrasion and lack of regular washing cause fibre balls to appear on the surface of the fabric. Remove by carefully brushing or picking off.

Fading in Sunlight: Sunlight can be very harmful to fabrics and the effects are irreversible. Reduce exposure to direct sunlight wherever possible.
Colour Staining: Always wash similar colours together. Never leave damp garments together for any length of time.

Stain Removal

Most stains can be removed by soaking in cold water as long as the fabric is washable, but as with all stains, prompt attention is important. Do not use hot water to rinse the stain as it may cause it to set. Place the stain to be removed over an absorbent cloth or wad of kitchen paper. In order to avoid a ring, first target the area around the stain and then work towards the centre, preventing it from spreading into the fabric.

Always test the removal method on a hidden part of the garment first to ensure that it does not harm the fabric.

Ball Point Pen: Apply methylated spirit or glycerine sparingly and mop up any loose colour. Rub any remaining stain with detergent and wash as per the care label.

Blood, Gravy, Ice-cream, Egg, Chocolate:

Soak the stain in cold water and salt or in warm soapy water and then wash immediately as per the care label.

Coffee & Tea: Soak up liquid with an absorbent cloth and sponge with warm water. Rinse with cold water and wash as per the care label.

Fat, Grease & Oils: Remove as much of the deposit as possible and work in neat washing up liquid with fingers. Treat with warm water and then wash immediately as per the care label.

Make-up: Do not rub the stain. Pat with talcum powder to soak up any grease and then work in neat washing up liquid with fingers before washing.

Perspiration: Sponge with weak solution of water and vinegar then rinse. Launder as per the care label.

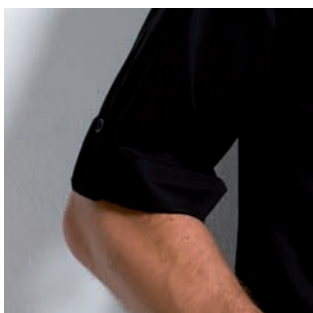
Beer & Spirits: Rinse or soak the stain in luke warm water and then launder in heavy duty detergent as per the care label.

Wine: White Wine - rinse the stain in warm water then soak in a warm detergent solution. Red Wine - first soak the stained area immediately in white wine or soda water to remove the colour, then launder as per the care label.

GARMENT STYLING POINTS

KK119:

- fused collar
- mock turn back cuffs with epaulettes
- single needle stitched yoke and armholes
- shirt tail bottom
- comfort finish cuff seams
- spare button



KK120:

- double folded side & sleeve seams
- shirt tail bottom
- spare button
- fused collar
- single needle stitched armholes
- back yoke

KK735:

- spare button
- fused collar
- comfort finish cuffs
- semi fitted
- front and back darts
- rounded hem
- shaped side seams
- concealed placket

KK121:

- spare button
- fused collar
- double folded side & sleeve seams
- adjustable cuffs
- shirt tail bottom
- single needle stitched armholes

KK738:

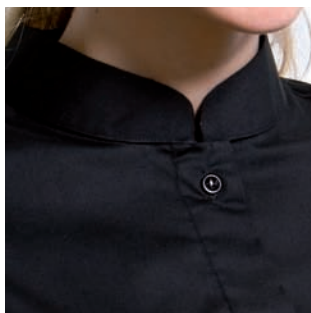
- soft fused collar
- semi fitted
- two buttoned adjustable cuffs
- double folded side and sleeve seams
- double stitched yoke and armholes
- shirt tail hem
- spare button

KK122:

- soft fused mandarin collar
- concealed placket
- shirt tail bottom
- double folded side and sleeve seams
- single needle stitched yoke and armholes
- spare button

KK736:

- soft fused mandarin collar
- concealed placket
- shirt tail bottom
- side vents
- single needle stitched shoulders and armholes
- spare button



KK137:

- soft fused collar
- adjustable belt with buckle fastening at back
- two pockets at lower front
- V shaped front hem
- straight hem at back
- two buttoned adjustable cuffs
- spare button

KK737:

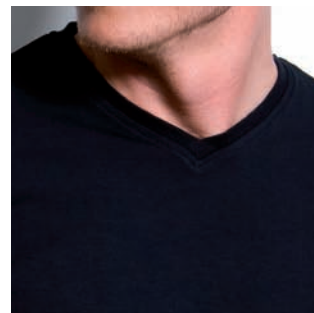
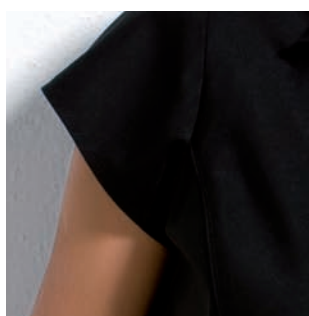
- soft fused collar
- adjustable belt with buckle fastening at back
- two pockets at lower front
- V shaped front hem
- straight hem at back
- two back pleats
- button cuff
- link fastened cuffs
- spare button

KK745:

- spare button
- fused collar
- semi fitted
- open neck
- front and back darts
- rounded hem
- turn back cuff
- shaped side seams

KK795:

- spare button
- fused collar
- open neck
- rounded hem
- shaped side seams
- fitted
- back darts
- curved front panels with piping detail



KK511:

- narrow high V neck
- mitred V
- comfort finish cuff seams
- taped back neck
- single needle stitching around neck
- self fabric taped shoulder seams
- semi fitted

KK512:

- narrow deep V neck
- mitred V
- comfort finish cuff seams
- taped back neck
- single needle stitching around neck
- self fabric taped shoulder seams
- semi fitted



KK513:

- double pocket centre front one zipped and one open
- self fabric waist ties

KK514:

- double pocket centre front
- self fabric waist ties

MEASURING GUIDE - for him

UK sizes

To fit	S		M		L		XL		2XL		3XL	4XL	5XL
chest (cm)	92/97		102		107		112		117/122		127/132	137/142	147/152
chest (ins)	36/38		40		42		44		46/48		50/52	54/56	58/60
collar (ins)	14.5	15	15.5	16	16.5	17	17.5	18	18.5	19	19.5	20	21
collar (cm)	37	38	39/40	41	42	43	44	45/46	47	48	49/50	51	53/54

European sizes

To fit	S		M		L		XL		2XL		3XL	4XL	5XL
size	46/48		50		52		54		56/58		60/62	64/66	68/70
chest (cm)	97		102		107		112		117/122		127/132	137/142	147/152
collar (cm)	37		39/40		42		44		47		49/50	51	53/54

How you measure up:

COLLAR Measure around the base of the neck whilst keeping one finger between the tape and the neck.

CHEST Measure around the fullest part of the chest keeping the tape under the upper arms.

MEASURING GUIDE - for her

UK sizes

To fit	XS		S		M		L		XL		2XL
size	6	8	10	12	14	16	18	20	22	24	26
bust (ins)	28	30	32	34	36	38	40	42	44	46	48

European sizes: Italy

To fit	XS		S		M		L		XL		2XL
size	38	40	42	44	46	48	50	52	54	56	58
bust (cms)	71	76	81	86	91	96	101	106	111	116	121

European sizes: France, Spain & Portugal

To fit	XS		S		M		L		XL		2XL
size	34	36	38	40	42	44	46	48	50	52	54
bust (cms)	71	76	81	86	91	96	101	106	111	116	121

European sizes: Germany, Holland, Belgium, Norway, Sweden, Finland, Denmark, Luxembourg & Greece

To fit	XS		S		M		L		XL		2XL
size	32	34	36	38	40	42	44	46	48	50	52
bust (cms)	71	76	81	86	91	96	101	106	111	116	121

How you measure up:

BUST Measure around the fullest part of the bust keeping the tape under the upper arms.

TECHNICAL DEFINITIONS

ADJUSTABLE CUFFS

Dual buttoning on cuff giving optional fastening for extra comfort.

COMBED COTTON

Yarn is combed at the spinning stage in order to draw out dead fibres.

COMFORT FINISH CUFF SEAMS

Cuff seam is sewn flat for added comfort.

DOUBLE FOLDED SEAMS

The seam edge is folded twice sealing the seam and adding strength.

EASY IRON

A special finish to the surface of the fabric which reduces creases and minimises ironing.

FITTED

A shaped fit both feminine and sleek enough to be worn under a jacket.

FUSED COLLAR

An interlining is fused into the collar to help retain its shape.

REINFORCED SHOULDER

Tape inserted into the seam giving extra strength.

SEMI FITTED

Garment features soft tailoring to the waist and hips for easy layering.

SIDE VENTS

Small opening at the base of side seam for a comfortable sporty look.

ETHICAL STATEMENT

Kustom Kit adopts a rigorous selection process for garment manufacturers ensuring only those that are totally committed to exceeding our high ethical standards become appointed suppliers.

We recognise and honour our duty to protect the workforce used in the manufacture of Kustom Kit garments. Each appointed manufacturer must conform to the following terms as a minimum requirement:

- Children must not be employed below the legal minimum age required by the law of the individual country.
- Employees are to be paid no less than the legal minimum wage as required by the law of the individual country.
- Working hours must not exceed those set out by local legislation and overtime must be voluntary.
- Maternity leave must be made available to all female employees.
- Good working conditions must prevail. The provision of adequate wash room facilities and a canteen are essential.
- Primary medical care must be provided on site.
- Living accommodation should be provided to staff where necessary.

To ensure continued compliance, our manufacturers are frequently inspected and reported upon by local independent agents.

As a further safeguard, unannounced inspections are regularly made by Kustom Kit senior management.

Kustom Kit is also dedicated to protecting the environment and purposely seeks out suppliers who take positive action to minimise both waste and the impact of their manufacturing processes on the surrounding environment.



